



The Wall in the West Bank

Produced by PALDIS for:

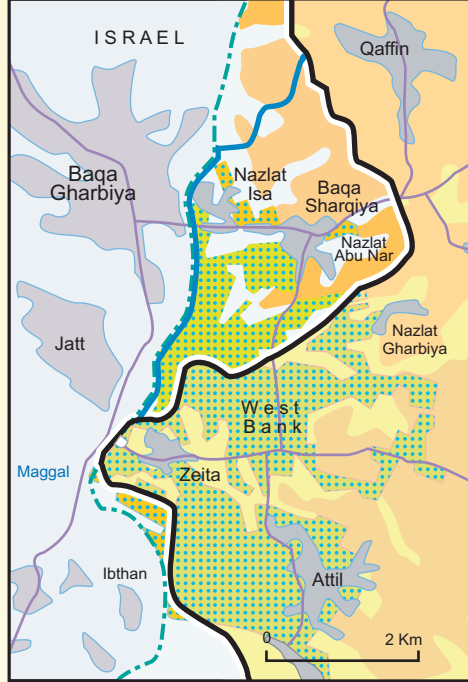


This map is an insert in the PANGON publication: *The Wall in Palestine: Facts, Testimonies, Analysis and Call to Action*

This Map depicts the entire completed and projected Wall according to the Israeli military's recommendations, which is to run the length of close to 600 kilometers. The map clarifies the overall implications of the Wall: to isolate large tracts of lands from their owners and create relatively "larger" and "smaller" Palestinian cantons and enclaves.

Over 200 communities are directly affected by the Wall, either by being isolated outside of the projected cantons or by being separated from their lands by the Wall. Close to one-half of the West Bank is walled-in, the other half in areas expected to be in the illegally-controlled "Israeli-part" of the West Bank; in these areas settlement expansion and creation are expected to dramatically increase in the process of Israel's de facto control of these areas.

Local Impacts 1 : Baqa Sharqiya

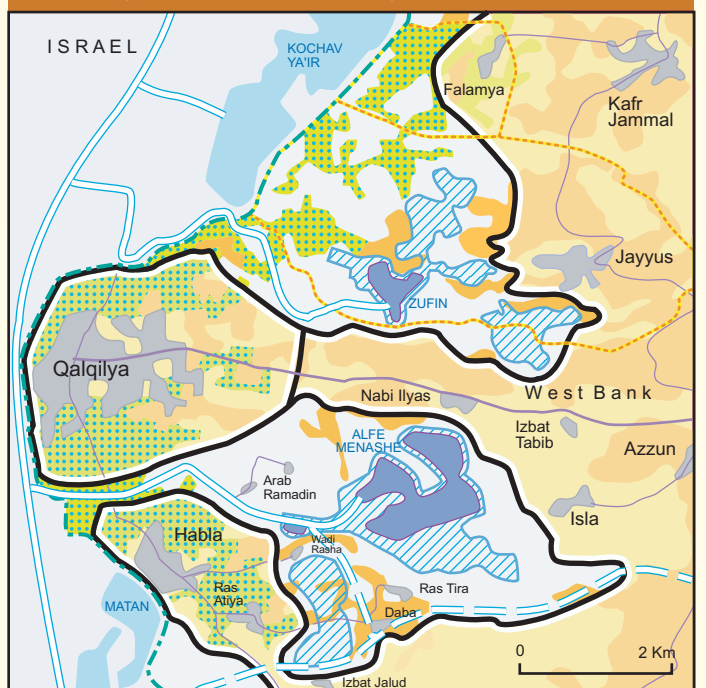


Focusing-in on portions of the Tulkeram and Qalqilya districts, the Local Impacts Maps highlight the purpose behind the Wall and its path. Affected communities are finding huge parts of their lands isolated and inaccessible, while the lands themselves are fertile and represent the backbone of personal, communal and national agricultural development as well as general survival. The Wall includes settlements on the so-called "Israeli side" of the Wall, promoting their expansion as well as the building of networks to integrate these occupied lands into Israel.

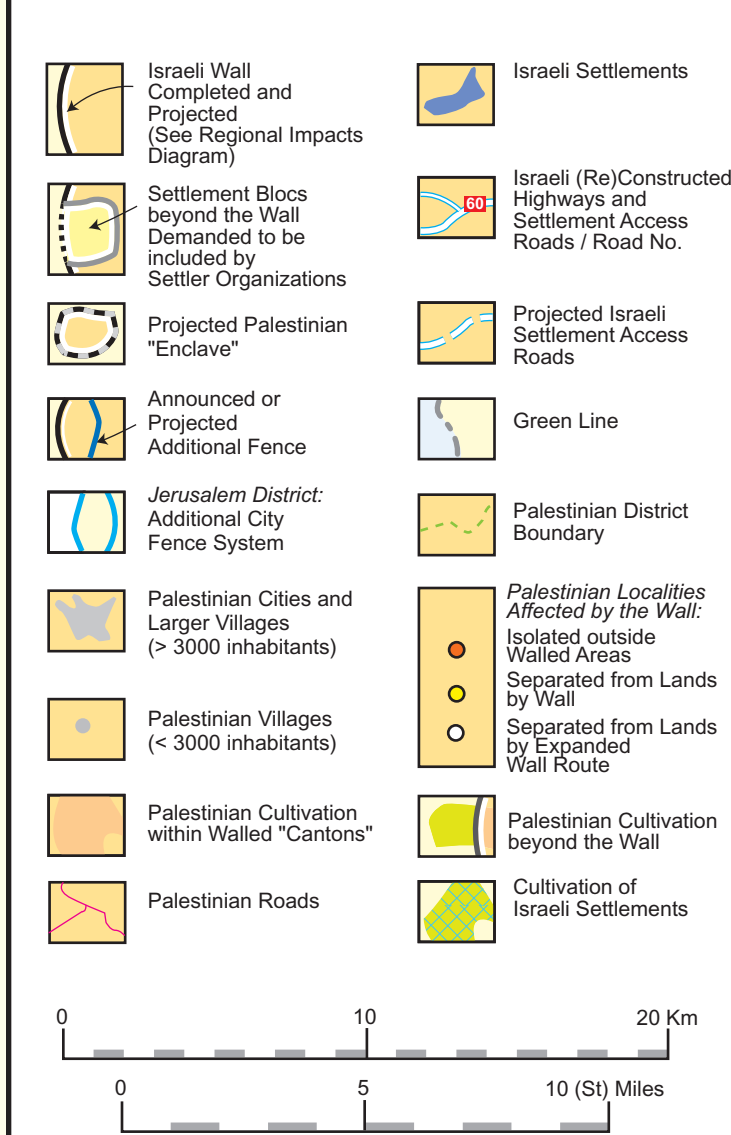
LOCAL IMPACTS LEGEND



Local Impacts 2 : Qalqilya and Surroundings

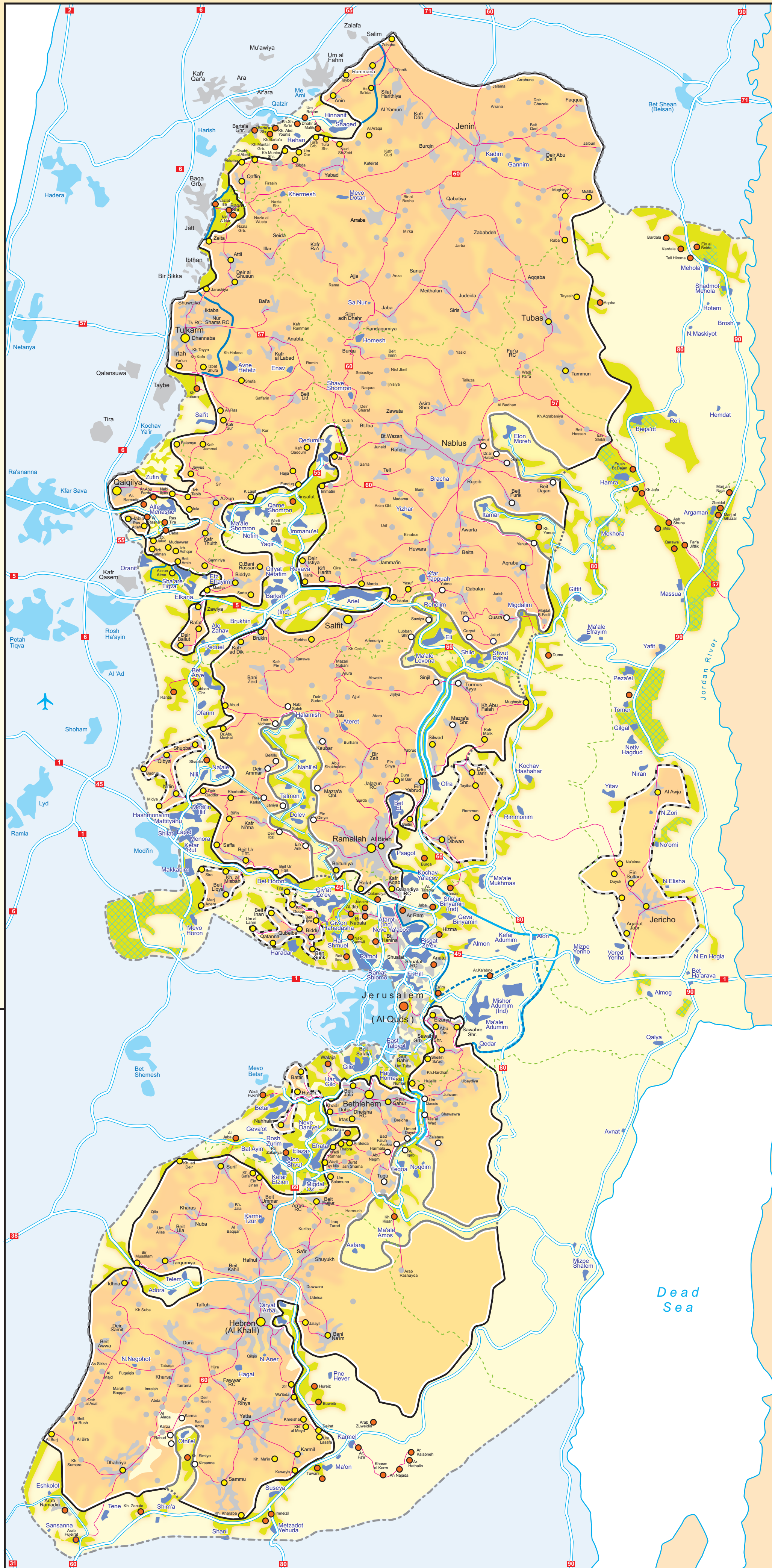


WEST BANK MAP LEGEND



Map Projection: Transverse Mercator
Scale: 1: 250.000

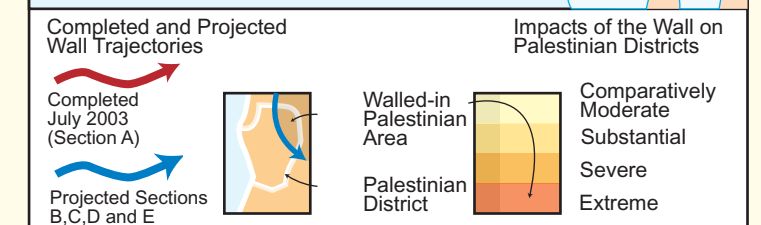
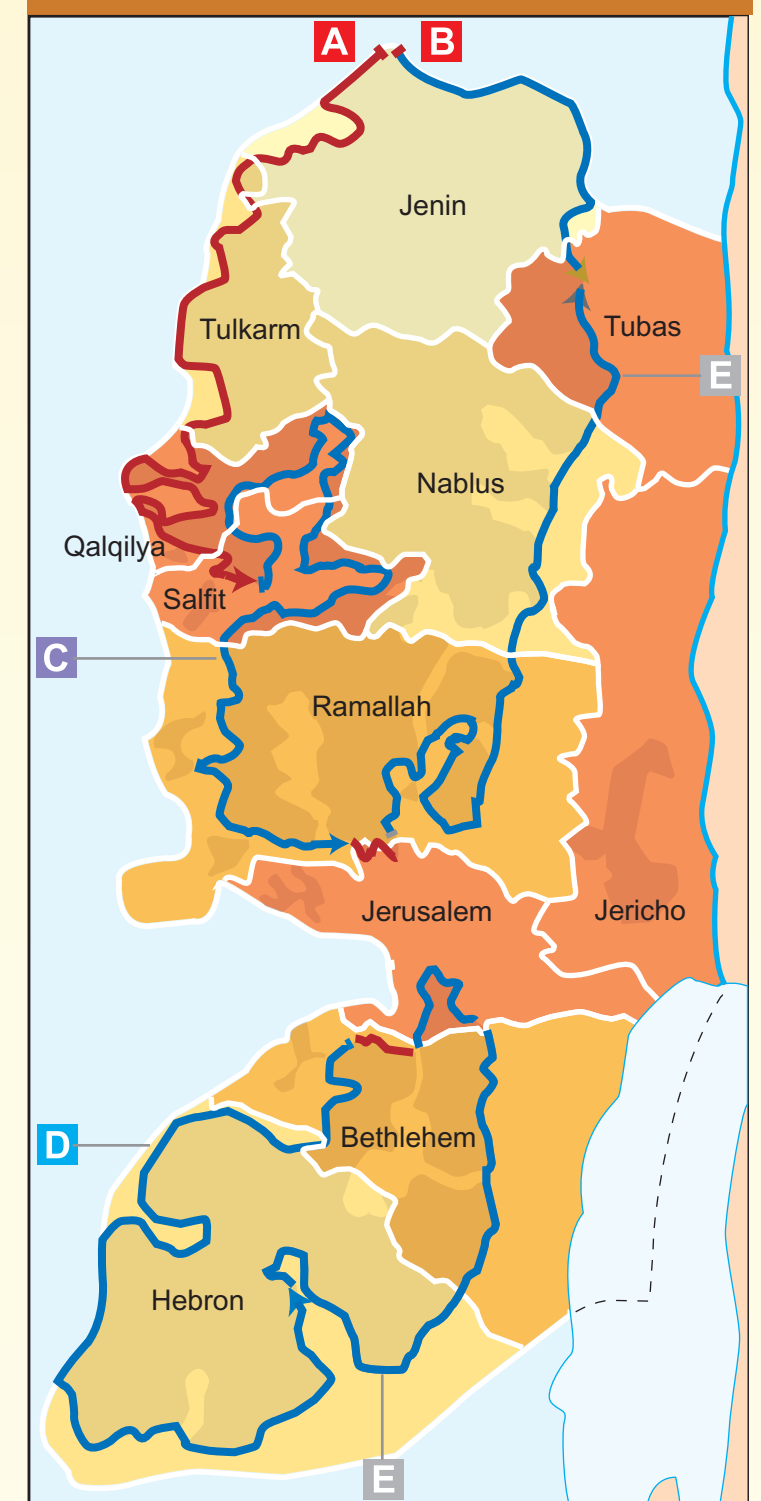
Conceptualization: Palestine Land Development and Realization: Information Systems (PALDIS) Ramallah
Copyright © 2003, PALDIS, Ramallah



The control of lands, the encaging of countless communities and the destruction of potential rural and urban growth only further highlights the goals of the Wall. The magnitude of the Wall is clear, in that, ultimately, no community will remain free from its affects. No viable state is possible; an end to the Occupation of lands occupied in 1967 is farther away.

The Diagram below shows the impacts of the Wall at a regional level, that of the Palestinian Districts. Impacts are depicted according to a range of "comparatively moderate" to "extreme" based on aggregate criteria such as territorial cohesion, isolation of Palestinian lands and communities, and road contiguity.

Regional Impacts



As this Map goes to press, in July 2003, evidence has surfaced of an additional so-called "Jerusalem Envelope" Wall. It is meant to separate Palestinian suburbs like Ar Ram from the City, while closely tying settlements like Ma'ale Adumim to the City. The Map shows a minimal option (interrupted blue line) and an extended option (solid blue line).

Basic Numbers

